



DURABLE ROOFING SOLUTIONS

REPLACE YOUR METAL SHEETS...

Choose optimum over least and peace over disturbance. For the cooling effect inside your vicinity without getting disturbed by the thrumming noise of rains in monsoons and harsh UV rays in summers, replace your metal roofs with PVC, UPVC and polycarbonate roofs that are not only durable but they also give stunning look to your vicinity.



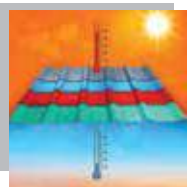
Strong fire resistance

According to the UL94-2013 standard tests conducted by the SGS, our insulated roof panels are proven to have flame rating that is not less than V0. Which means, Our PVC/ASA roofing sheets are non-flammable and the material performs efficiently in a fire on the exterior of the property.



Superior corrosion resistance

Our range of roofing sheets have an excellent corrosion resistance with no chemical reactions when immersed for 24 hours in acid solution of concentration below 70%, saline solution, or alkali solution. These roofing sheets are ideal for coastal areas as well as areas with frequent.



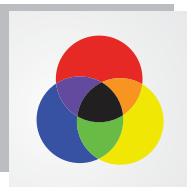
Remarkable Heat Insulation

Our plastic roofing materials have remarkable heat insulation performance. The heat conductivity efficiency is 0.07W/ (m.K), which is 1/6 times more coefficient than cement roofing tile and only 1/2200 times more coefficient than that of 0.5mm thick color steel tiles.



Good Sound Insulation

The test shows that the roofing sheet boasts good noise absorbing effect under the noise of rainstorm and strong wind. It can make the noise 30dB lower than the color steel tile.



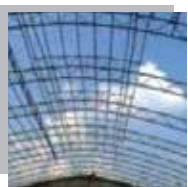
Long lasting colour stability

Our PVC/ASA roofing sheets have an outstanding anti-UV performance with at least 10 years' of color stability ($\Delta E \leq 5$) when exposed to varied temperatures and any other severe environmental conditions for outdoor use in areas with strong sun radiation.



High Loading and Bearing Capacity

Our products have very high loading capacity. The roof sheet (3mm thick) can be bearing 120kg when the purlin spacing is less than 700mm.

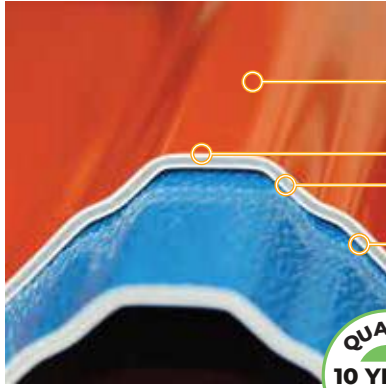


Efficient and convenient installation

Our weatherproof ASA-PVC roofing sheets weighs light than clay tiles. They offer an effective width up to 1050mm with ensuring high installation efficiency. They also cost lesser than clay tiles without affecting your budget roofing construction.

ASA-uPVC ROOFING SHEET (SR-1070)

Our weatherproof ASA-PVC roofing sheet is electrical insulating and it is manufactured by one time processing through three to four layer co-extrusion technique. These roofing sheets are easy cleaning with good thermal and sound insulation and efficiently resists the water, fire, corrosion, and contaminations as well. With high toughness, they can also withstand strong winds, shocks and heavy hails. They weigh light and thus ensures easy installation.



1. The adoption of highly weather resistant engineering resin **ASA** from **SABIC**, one of the Global 500 companies in the world, makes sure the surface layer has at least 10 years' color stability, superior UV resistance, and excellent corrosion resistance as well.
2. Good quality modified PVC materials with high toughness is adopted to ensure the strength while without compromising on the rigidity.
3. The special foam structured material which delivers good heat and sound insulation.
4. Adopts high toughness to ensure both strength and rigidity. The special material also offers a sense of space, and makes the building interior look brighter.

Factors

- Splendid water resistance
- Supporting up to 700mm purlin spacing
- Corrosion resistance & Anti-UV Performances

Note: For thickness above 3mm, the purlin spacing can be extended upto 1000mm

Applications of Weather proof ASA-uPVC Roof Sheets

The only roofing solution with dynamic uses from protecting to enhancing your vicinity.

- High Grade Factories.
- Warehouses.
- Schools and Universities.
- Clubs houses & Community centers.
- Five star hotels & resort on beaches.

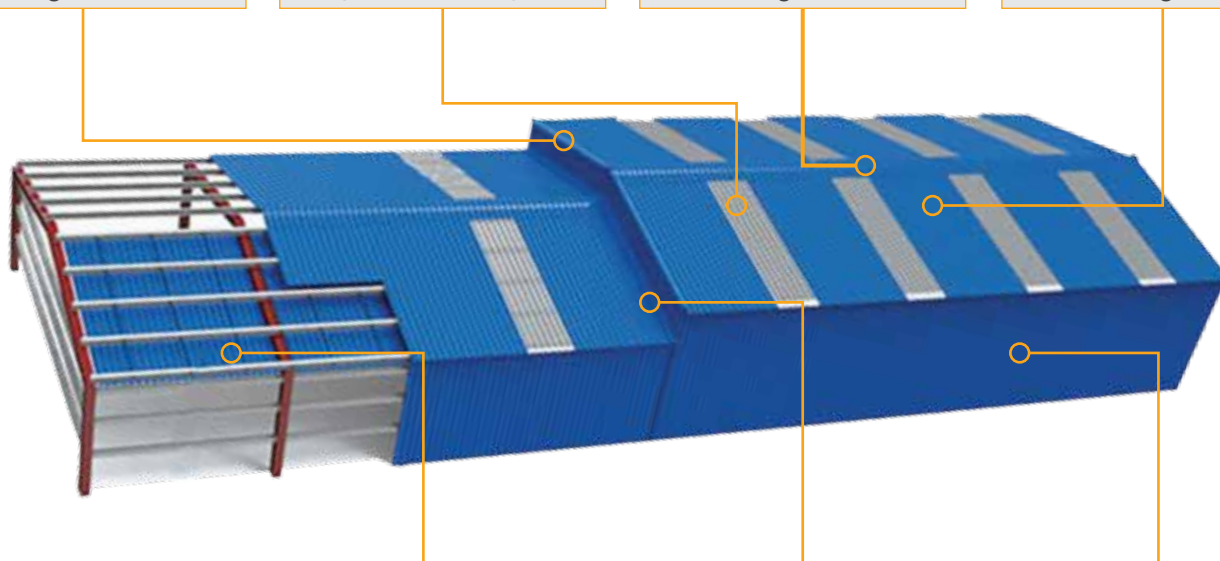
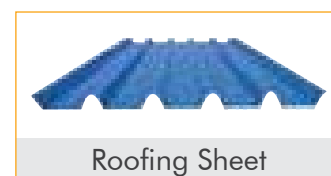
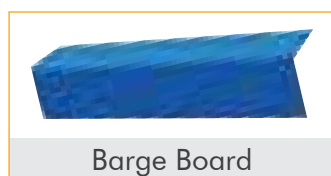


Specifications

Model	HB-ABRT		
Profile (SR 1070)			
Profile (SR 1130)			
Thickness	2.0mm	2.5mm	3.0mm
Purlin Span	700mm	800mm	900mm
Length	5800mm, 11800mm or Customizable		
Overall Width	1130mm-effective with 1 meter		
Effective Width	1000mm (for SR 1070)	1050mm (for SR 1130)	
Slope	>20°		
Weight	2.0mm: 3.9 kg/m ²	2.5mm: 4.9 kg/m ²	3.0mm: 5.90 kg/m ²

Accessories List

Durable accessories or durable roofing sheets that are anti-corrosive with excellent design, material, conductivity and tractability.



Technical Data (Thickness - 3mm)

Test item	Test method	Test condition	Test result	
UV Exposure	ASTM G154-12, ASTM D2244-11	ASTM G154-12 cycle 1, Lamp type: UV340, Exposure period: 200h	$\Delta E^*_{ab} = 0.5$	
Tensile strength	ASTM D638-10	Testing speed: 50mm /min	32 Mpa	
Flexural strength	ASTM D790-10 Procedure A	Testing speed: 1.3mm /min Span: 48mm	60 Mpa	
Impact resistance	ASTM D5420-10	Geometry: GE(\varnothing 12.70mm) Impact weight: 0.9kg	Mean failure energy- 4J	
High temperature resistance		60°C , 6h	No visible change	
Low temperature resistance		-35°C , 6h	No visible change	
Chemical resistance		70% Ethanol solution, (V/V), Immersion test, 23°C, 2h	No visible change	
		10% NaOH Solution, (m/m), Immersion test, 23°C, 2h	No visible change	
		Saturation NaCL Solution, Immersion test, 23°C, 2h	No visible change	
Thermal conductivity	ASTM C518-10	Mean temperature (°C)	Temperature difference (°C)	Thermal conductivity [W/(m.K)]
		25.48	9.36	
20mm Vertical burning test	UL 94-2013 Section 8	Specimen: 129x12.5x3.0mm	V-0	
Sound		Compare with metal roof tile	30dB lower	

Note: The above testing results are achieved based on 3mm thick and tests conducted by SGS and are provided for reference only.

Waterproof Accessories

These special waterproof installation accessories are independently designed by us for proper installation and fixation of our ASA-PVC Roofing Sheets. They play an important role in fixing the sheeting materials properly, thereby avoiding water leakage and distortion as well as other unusual circumstances. Our ASA-PVC Roofing Sheets has a strong resistance against water that gives complete roofing protection to your rooms and halls.

So as to prevent water leakage and extend the service life of the roofing material, we recommend using 5 sets of fittings for every square meter of roofing sheet during installation of our special ASA-PVC waterproof accessories.



Special Features

- 10 Years no color fading
- Excellent Anti-UV performance
- Superior corrosion resistance
- Peaceful sleep during monsoon
- Splendid water resistance
- All weather proof
- Good sound insulation properties
- Colour choice
- No Maintenance



Color Choice of Spanish Style ASA Roof Tile



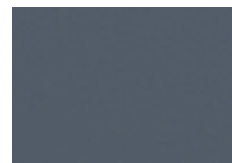
Brick Red
(APRT-C-001)



Purplish Red
(APRT-C-002)



Skye Blue
(APRT-C-003)



Dark Grey
(APRT-C-004)



Dark Green
(APRT-C-005)



Brick Red
(APRT-C-E-001)



Purplish Red
(APRT-C-E-002)



Skye Blue
(APRT-C-E-003)



Dark Grey
(APRT-C-E-004)



Dark Green
(APRT-C-E-005)

Ideal Roofing Solutions for:

Schools & Colleges, Educational Institutions in Urban areas and cities where climate is very hot.

Animal shelter like Stud Farm, Cow Shed and Pet Shelters.

Five Star Hotels and Resorts on beaches and hill stations.

Community Centres, Club Houses, Mini Stadiums, Public Utility places and Sports Centre.

Corporate Office

EVERBEST MARKETING AND SALES SERVICE

Turbhe, Navi Mumbai - 400705.

Email: info@spancoroofing.com | Web: www.spancoroofing.com

Channel Partners

